

N89°17'07"W
112.81'

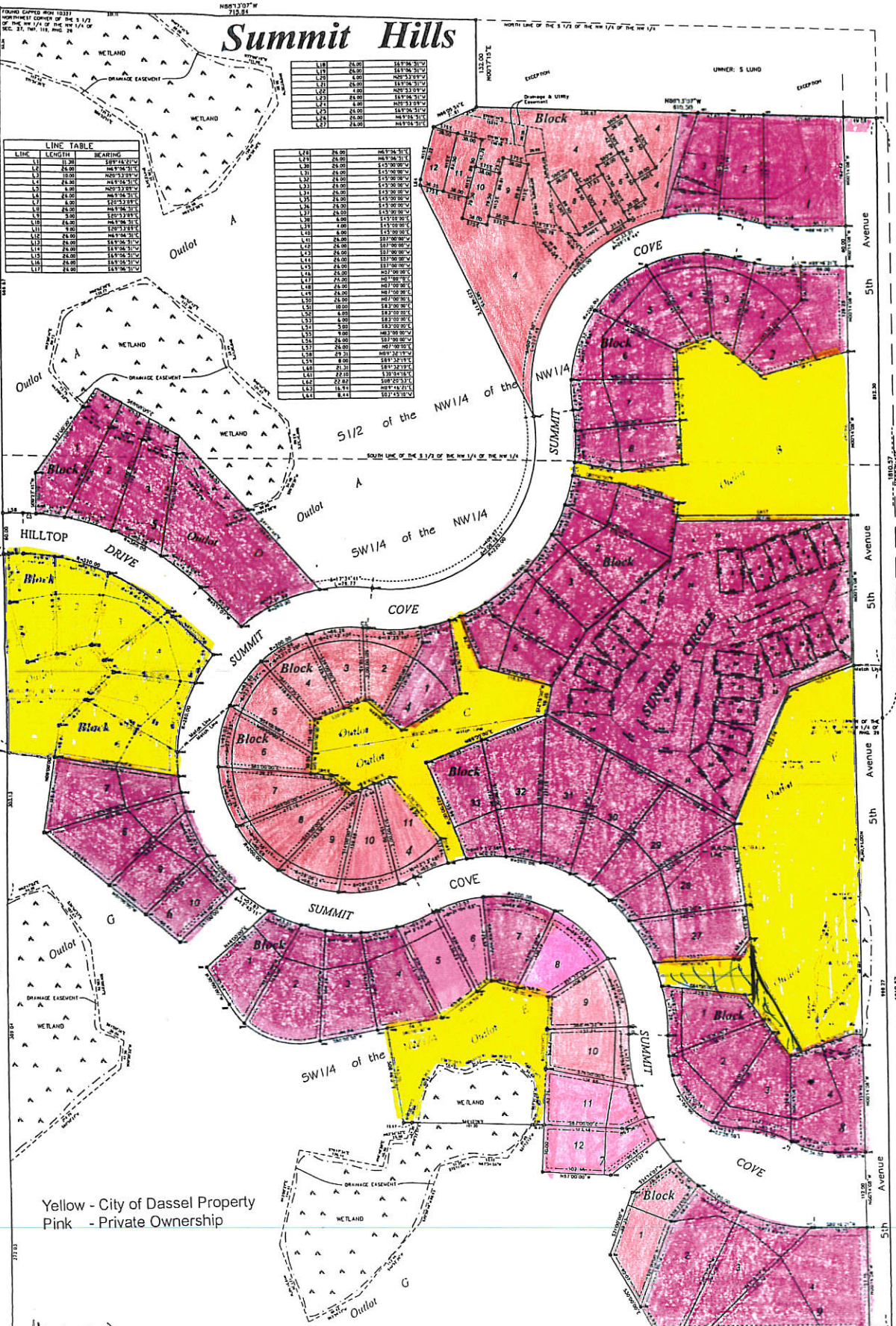
Summit Hills

FOUND CORNER HIGH 10337
NORTHWEST CORNER OF THE S 1/2
OF THE SW 1/4 OF THE NW 1/4 OF
SEC. 27, T49N, R18E, S4

LINE	LENGTH	BEARING
L1	11.20	S89°42'21"W
L2	23.00	N87°56'31"W
L3	23.00	N20°33'09"W
L4	23.00	N87°56'31"W
L5	23.00	N20°33'09"W
L6	23.00	N87°56'31"W
L7	23.00	N20°33'09"W
L8	23.00	N87°56'31"W
L9	23.00	N20°33'09"W
L10	23.00	N87°56'31"W
L11	23.00	N20°33'09"W
L12	23.00	N87°56'31"W
L13	23.00	N20°33'09"W
L14	23.00	N87°56'31"W
L15	23.00	N20°33'09"W
L16	23.00	N87°56'31"W
L17	23.00	N20°33'09"W

L18	23.00	N87°56'31"W
L19	23.00	N20°33'09"W
L20	23.00	N87°56'31"W
L21	23.00	N20°33'09"W
L22	23.00	N87°56'31"W
L23	23.00	N20°33'09"W
L24	23.00	N87°56'31"W
L25	23.00	N20°33'09"W
L26	23.00	N87°56'31"W
L27	23.00	N20°33'09"W

L28	23.00	N87°56'31"W
L29	23.00	N20°33'09"W
L30	23.00	N87°56'31"W
L31	23.00	N20°33'09"W
L32	23.00	N87°56'31"W
L33	23.00	N20°33'09"W
L34	23.00	N87°56'31"W
L35	23.00	N20°33'09"W
L36	23.00	N87°56'31"W
L37	23.00	N20°33'09"W
L38	23.00	N87°56'31"W
L39	23.00	N20°33'09"W
L40	23.00	N87°56'31"W
L41	23.00	N20°33'09"W
L42	23.00	N87°56'31"W
L43	23.00	N20°33'09"W
L44	23.00	N87°56'31"W
L45	23.00	N20°33'09"W
L46	23.00	N87°56'31"W
L47	23.00	N20°33'09"W
L48	23.00	N87°56'31"W
L49	23.00	N20°33'09"W
L50	23.00	N87°56'31"W
L51	23.00	N20°33'09"W
L52	23.00	N87°56'31"W
L53	23.00	N20°33'09"W
L54	23.00	N87°56'31"W
L55	23.00	N20°33'09"W
L56	23.00	N87°56'31"W
L57	23.00	N20°33'09"W
L58	23.00	N87°56'31"W
L59	23.00	N20°33'09"W
L60	23.00	N87°56'31"W
L61	23.00	N20°33'09"W
L62	23.00	N87°56'31"W
L63	23.00	N20°33'09"W
L64	23.00	N87°56'31"W
L65	23.00	N20°33'09"W
L66	23.00	N87°56'31"W
L67	23.00	N20°33'09"W
L68	23.00	N87°56'31"W
L69	23.00	N20°33'09"W
L70	23.00	N87°56'31"W
L71	23.00	N20°33'09"W
L72	23.00	N87°56'31"W
L73	23.00	N20°33'09"W
L74	23.00	N87°56'31"W
L75	23.00	N20°33'09"W
L76	23.00	N87°56'31"W
L77	23.00	N20°33'09"W
L78	23.00	N87°56'31"W
L79	23.00	N20°33'09"W
L80	23.00	N87°56'31"W
L81	23.00	N20°33'09"W
L82	23.00	N87°56'31"W
L83	23.00	N20°33'09"W
L84	23.00	N87°56'31"W
L85	23.00	N20°33'09"W
L86	23.00	N87°56'31"W
L87	23.00	N20°33'09"W
L88	23.00	N87°56'31"W
L89	23.00	N20°33'09"W
L90	23.00	N87°56'31"W
L91	23.00	N20°33'09"W
L92	23.00	N87°56'31"W
L93	23.00	N20°33'09"W
L94	23.00	N87°56'31"W
L95	23.00	N20°33'09"W
L96	23.00	N87°56'31"W
L97	23.00	N20°33'09"W
L98	23.00	N87°56'31"W
L99	23.00	N20°33'09"W
L100	23.00	N87°56'31"W



Yellow - City of Dassel Property
Pink - Private Ownership

11-2017

76. CASS COUNTY ON
SEC. 27, T49N, R18E, S4

1332.03
N89°37'06"E

SOUTHEAST CORNER OF THE
SW 1/4 OF THE NW 1/4 OF
SEC. 27, T49N, R18E, S4