

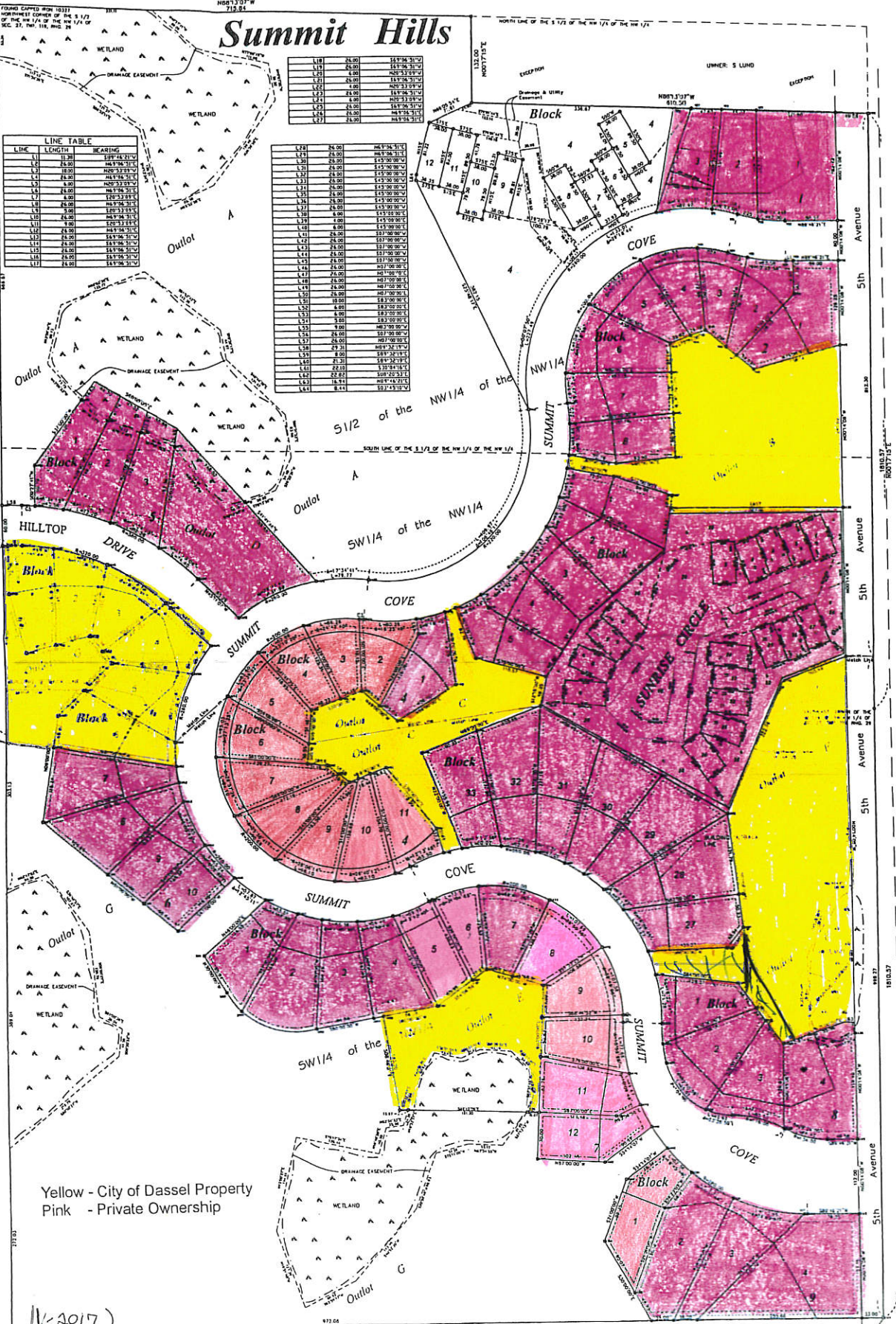
Summit Hills

FOUND CORNER WITH 1813
NORTHWEST CORNER OF THE S 1/2
OF THE NW 1/4 OF THE NW 1/4 OF
SEC. 27, TWP. 118, R. 20

N80°13'03"W
718.84

LINE	LENGTH	BEARING
L.1	11.30	S89°42'21"W
L.2	25.00	N49°06'31"E
L.3	11.30	S89°42'21"W
L.4	25.00	N49°06'31"E
L.5	11.30	S89°42'21"W
L.6	25.00	N49°06'31"E
L.7	11.30	S89°42'21"W
L.8	25.00	N49°06'31"E
L.9	11.30	S89°42'21"W
L.10	25.00	N49°06'31"E
L.11	11.30	S89°42'21"W
L.12	25.00	N49°06'31"E
L.13	11.30	S89°42'21"W
L.14	25.00	N49°06'31"E
L.15	11.30	S89°42'21"W
L.16	25.00	N49°06'31"E
L.17	11.30	S89°42'21"W
L.18	25.00	N49°06'31"E
L.19	11.30	S89°42'21"W
L.20	25.00	N49°06'31"E

L.21	25.00	N49°06'31"E
L.22	25.00	N49°06'31"E
L.23	25.00	N49°06'31"E
L.24	25.00	N49°06'31"E
L.25	25.00	N49°06'31"E
L.26	25.00	N49°06'31"E
L.27	25.00	N49°06'31"E
L.28	25.00	N49°06'31"E
L.29	25.00	N49°06'31"E
L.30	25.00	N49°06'31"E
L.31	25.00	N49°06'31"E
L.32	25.00	N49°06'31"E
L.33	25.00	N49°06'31"E
L.34	25.00	N49°06'31"E
L.35	25.00	N49°06'31"E
L.36	25.00	N49°06'31"E
L.37	25.00	N49°06'31"E
L.38	25.00	N49°06'31"E
L.39	25.00	N49°06'31"E
L.40	25.00	N49°06'31"E
L.41	25.00	N49°06'31"E
L.42	25.00	N49°06'31"E
L.43	25.00	N49°06'31"E
L.44	25.00	N49°06'31"E
L.45	25.00	N49°06'31"E
L.46	25.00	N49°06'31"E
L.47	25.00	N49°06'31"E
L.48	25.00	N49°06'31"E
L.49	25.00	N49°06'31"E
L.50	25.00	N49°06'31"E
L.51	25.00	N49°06'31"E
L.52	25.00	N49°06'31"E
L.53	25.00	N49°06'31"E
L.54	25.00	N49°06'31"E
L.55	25.00	N49°06'31"E
L.56	25.00	N49°06'31"E
L.57	25.00	N49°06'31"E
L.58	25.00	N49°06'31"E
L.59	25.00	N49°06'31"E
L.60	25.00	N49°06'31"E
L.61	25.00	N49°06'31"E
L.62	25.00	N49°06'31"E
L.63	25.00	N49°06'31"E
L.64	25.00	N49°06'31"E
L.65	25.00	N49°06'31"E
L.66	25.00	N49°06'31"E
L.67	25.00	N49°06'31"E
L.68	25.00	N49°06'31"E
L.69	25.00	N49°06'31"E
L.70	25.00	N49°06'31"E



Yellow - City of Dassel Property
Pink - Private Ownership

1/2 2017

DAKOTA COUNTY DISTRICT 1
SEC. 27, TWP. 118, R. 20

SOUTHEAST CORNER OF THE
S 1/4 OF THE NW 1/4 OF
SEC. 27, TWP. 118, R. 20